

CREATIVE PROBLEM SOLVING

idea

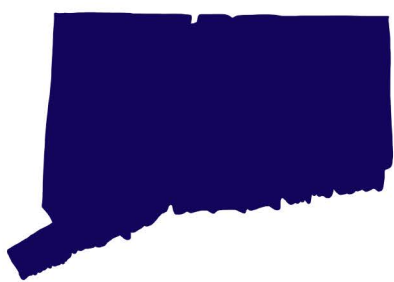
**Together we can be:**

Innovative, Creative & Divergent >

[Learn more](#)

STEM

**MAKE AN IMPACT**



CTOM has been challenging & inspiring students across Connecticut for the past 40 years



Each year, over 700 students from all different backgrounds and grade levels participate in the CTOM tournament



Worldwide, millions of students from throughout the U.S. and more than 20 other countries, have participated in Odyssey of the Mind

**EVERYONE CAN PARTICIPATE**



**Coaches/Teachers**



**Parents**



**Students**



**Town Coordinators**

**Together we can make a difference**

[Start a Team](#)

[Learn More >](#)

**WAYS TO SHOW YOUR SUPPORT**



**Start a Team**



**Volunteer**



**Share a Story**

**Sign up for our newsletter**

Enter your email address

[Sign up](#)

**Questions? Just ask!**

[FAQ](#)

**About Us**

- Page 1
- Page 2
- Page 3
- Page 4

**Start Odyssey**

- Page 1
- Page 2
- Page 3
- Page 4

**Register**

- Page 1
- Page 2
- Page 3
- Page 4

**Events**

- Page 1
- Page 2
- Page 3
- Page 4

**Sponzone**

- Page 1
- Page 2
- Page 3
- Page 4





## CTOM Introduction Session

A PowerPoint presentation is available for Parents, Coaches, Coordinators or anyone else who might be interested in learning more about Odyssey of the Mind. Please click [here](#) to download the presentation.

## Help is available

If you would like help from Connecticut Odyssey of the Mind (CTOM) to start this program at your school or organization please contact our [Association Director](#).

## Forming a team

Odyssey Teams include 5-7 students under the guidance of 1-2 adult coaches.

Divisions:

Primary- K- Grade 2

Division I – Grades 3-5

Division II – Grades 6-8

Division III – Grades 9-12

Students can be in different divisions with the competition division being determined by the grade of the eldest student on the team. Each team must be sponsored by a pre-existing community organization, usually this is a school but other membership organizations have included libraries, church groups, park and recreation programs, theater arts programs, Boys and Girls clubs among other community groups. The community organization cannot be formed specifically for Odyssey of the Mind.

Teams can be formed in many ways, coaches can recruit team members, schools can hold meetings for interested students and parents, have tryouts or group students according to interest.

Usually, more students want to participate in Odyssey than we have volunteer coaches, which limits the opportunities. Coaching is a great way for parents to spend quality time with their children and CTOM provides Coach Training and other resources to assist new coaches with the process. CONSIDER being a coach! It's not only fun but it's an enlightening experience to watch the creative process in action!

## CTOM Policy Guide

Become familiar with the [CTOM Policies](#). It is recommended reading for all coaches.

Sign up for our newsletter

Enter your email address

Sign up

Questions? Just ask!  
FAQ

### About Us

- Page 1
- Page 2
- Page 3
- Page 4

### Start Odyssey

- Page 1
- Page 2
- Page 3
- Page 4

### Register

- Page 1
- Page 2
- Page 3
- Page 4

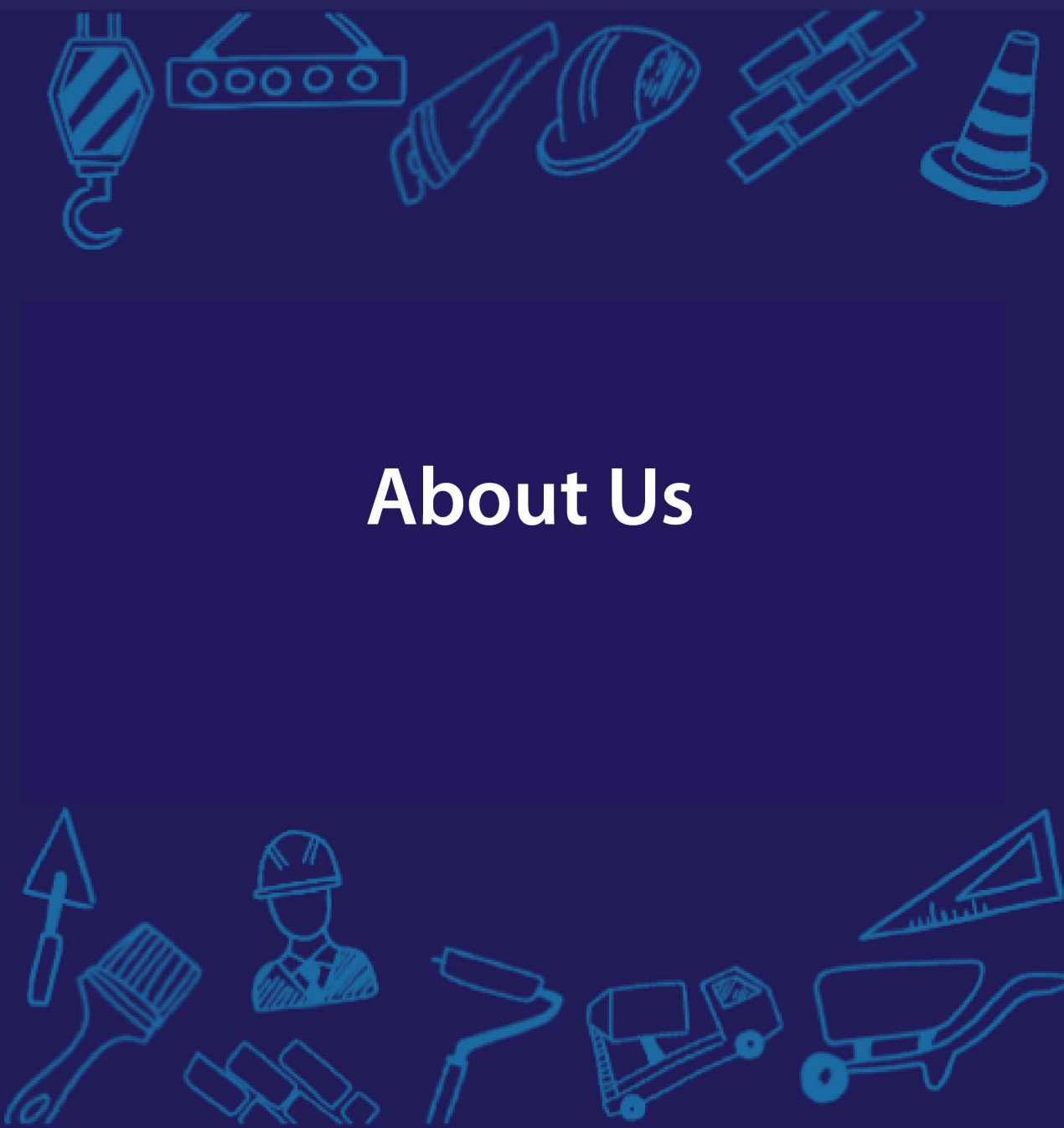
### Events

- Page 1
- Page 2
- Page 3
- Page 4

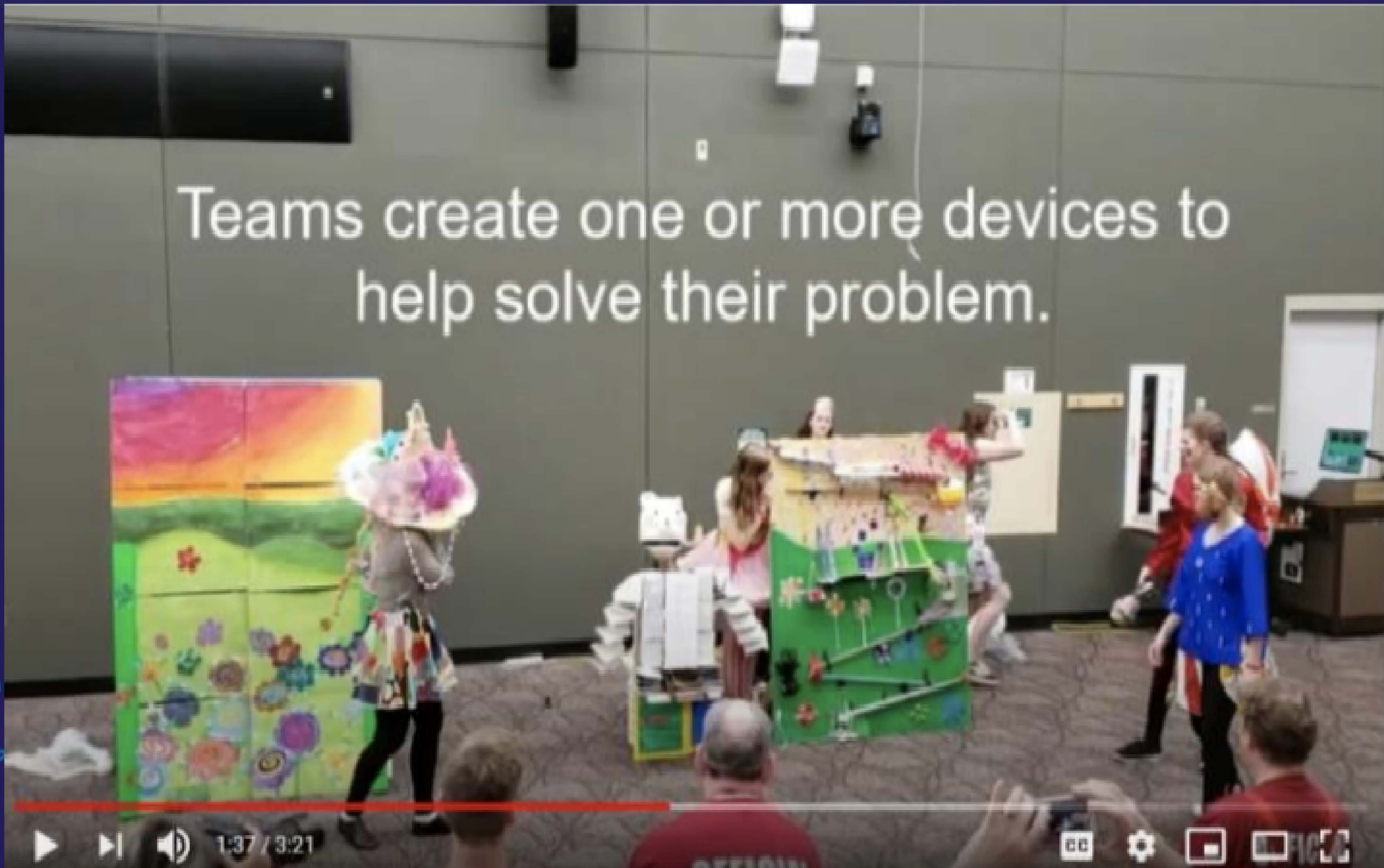
### Sponzone

- Page 1
- Page 2
- Page 3
- Page 4





## About Us



### HEADER

Odyssey of the Mind is an innovative, extra-curricular learning experience that promotes 21st Century Skills and STEAM-activities. Participants apply their creativity to solve problems that range from building mechanical devices to presenting their own interpretation of literary classics. They then bring their solutions to competition at the state and international level.

Connecticut Odyssey of the Mind (CTOM) is a 501(c)(3) non-profit that celebrates the positive power of creativity and fosters the development of teamwork and group problem solving skills for Connecticut youth from Kindergarten through College. CTOM brings the CT Common Core standards alive through project-based learning.

To learn more about Odyssey of the Mind, visit the national website [here](#). Contact us if you have additional questions.

Sign up for our newsletter

Enter your email address  [Sign up](#)

Questions? Just ask!  
FAQ

#### About Us

- [Page 1](#)
- [Page 2](#)
- [Page 3](#)
- [Page 4](#)

#### Start Odyssey

- [Page 1](#)
- [Page 2](#)
- [Page 3](#)
- [Page 4](#)

#### Register

- [Page 1](#)
- [Page 2](#)
- [Page 3](#)
- [Page 4](#)

#### Events

- [Page 1](#)
- [Page 2](#)
- [Page 3](#)
- [Page 4](#)

#### Sponzone

- [Page 1](#)
- [Page 2](#)
- [Page 3](#)
- [Page 4](#)