

DELIGHTING IN THE JOURNEY

Enthusiasm is infectious.
When you work on amazing
projects with amazing people,
it's hard not to feel happy.



The Joy of regeneration

Room to breathe,
literally and figuratively.
A comfortable custom-
made, four-season
greenhouse allows our
clients to start every
day with energizing
high-quality oxygen.
Who needs coffee
when you have that?





FROM THE
SOURCE...



...TO A
SOURCE
OF JOY



PONDER



PLAY

Make every
space a
happy place



Find joy in even the smallest rooms. Every texture, material, finish and color should stir the soul and provide a feeling of connection.









There is great possibility in collaboration. Goals become loftier, plans bolder, dreams closer. We rely on designers and architects, building managers and neighbors, vendors and homeowners. Before a sketch is penciled or mitre joint glued, the foundation is laid on a shared idea—manifest by all of us.



A PLACE TO CALL HOME



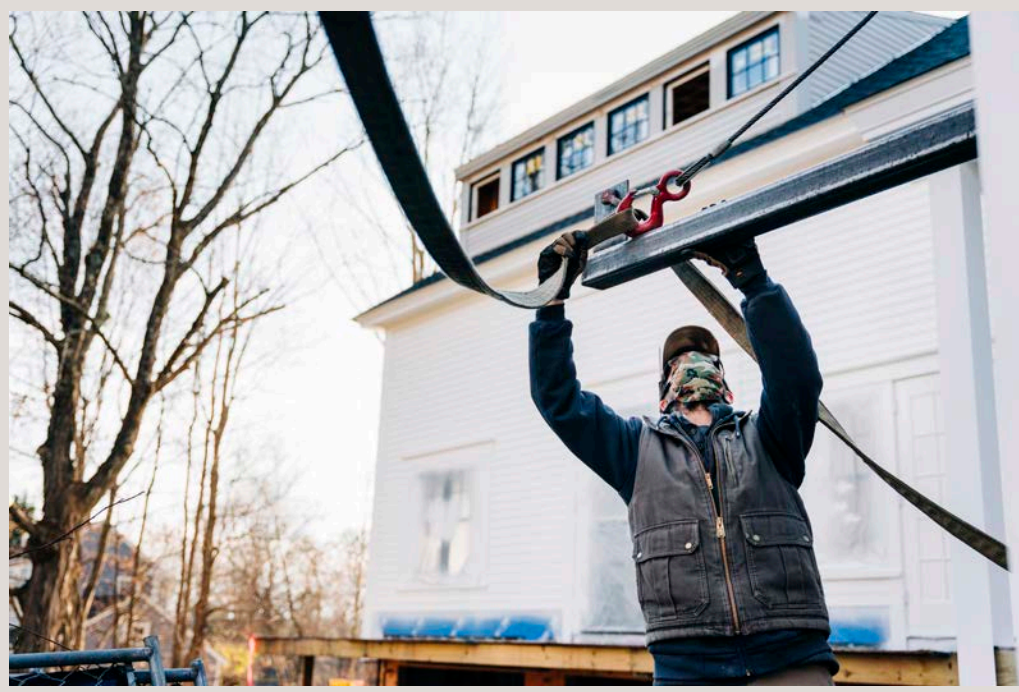
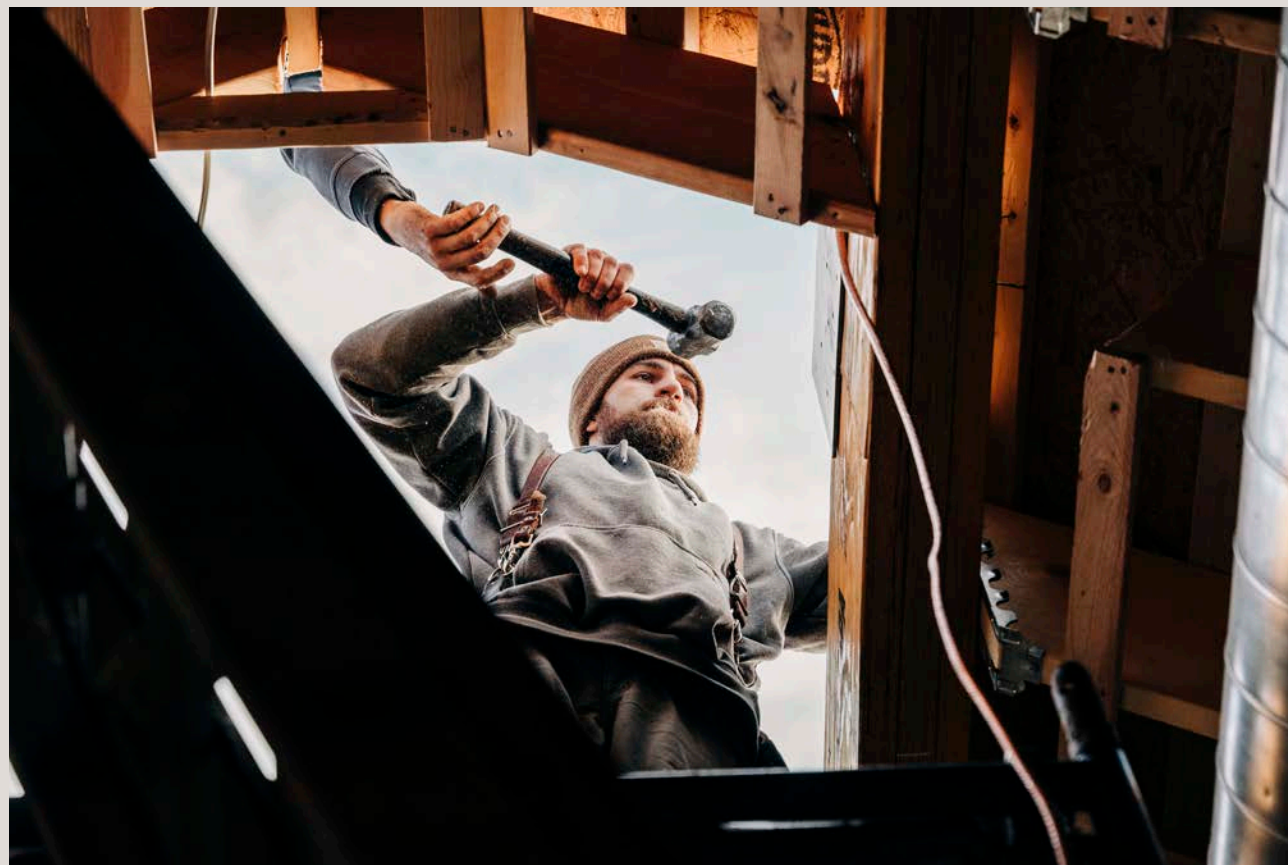


A PLACE TO C

“ A great project impacts the neighborhood, and it impacts the actual quality of life of the inhabitants. So they go out into the world, refreshed and at peace and loving their space. ”

—Eric Adams







Transforming a historic but compromised Carlisle, MA home back to its original grace, and creating a collaborative workspace for our team, was a true labor of love with the most joyful results.





True friendship is a curious thing. It ebbs and flows, is dynamic and quiet, powerful and nurturing. Seeing this picture transports me back to 1989, the year Angus and I met. If cell phones existed back then, I'm sure there would be a picture, very similar to this one, depicting Angus helping me understand our Algebra homework, or interpreting a poem for English class.

Several years ago, we were completing work for a funeral home and our client, the owner, was a very nice but cynical man who always said, "partners are for dancing"... He simply couldn't understand the power of true friendship, true partnership. When you have given your all in the pursuit of a lofty goal and only accomplished it because of the collective strength of a strong partnership, that is truly special.

Today, as we sit on the front porch of our new office, a decades-long endeavor, this picture reminds me of the power of teamwork and the beauty of true friendship. Collective strength of mutual engagement and tireless effort, that is truly special.

ACKNOWLEDGMENTS

This book covers just a fraction of the tremendous projects we've been blessed to work on and the brilliant people who have collaborated with us. A hearty thank you to everyone who has contributed to the growth of our mighty oak. Words cannot express the joy it has brought.

CREDITS

PHOTOGRAPHY

All images by Andrew Riley unless otherwise noted below.

Eric Adams
pg. 126, 127, 134-135

Cory Gans
pg. 118

Michael J. Lee
pg. 18-25, 48-49, 51-55, 63, 71, 73, 82-86, 88-89, 100, 108, 110, 111, 113, 120, 121, 123, 129, 148, 170, 174

Sean Litchfield
pg. 66

Joshua McHugh
pg. 114, 115, 164-165, 171

Laura Moss
pg. 15, 119

Greg Premru
pg. 140-147, 168-169, 173, 175

Nat Rea
pg. 8, 30, 31, 105, 109, 128, 150, 152, 153 (left), 155, 160, 161, 166, 167

Eric Roth
pg. 112

ILLUSTRATION

Edgar Stewart
pg. 17, 179 (inset)

COLLABORATORS

INTERIOR DESIGN

Alan Tanksley, INC.
pg. 110, 111, 113

Daher Interior Design
pg. 48-49, 51-55, 123, 170, 172

Daniel H Reynolds
pg. 18-25, 63

Jessica Vaule Interiors
pg. 68, 70, 71, 120, 121

Hopkins Rose Interiors
pg. 174

Koo de Kir Architectural Interiors
pg. 15, 118, 119

Kristen Rivoli Interior Design
pg. 140-147, 168-169, 173, 175

Lewis Interiors
pg. 8, 112, 150, 152, 155, 166, 167

Meredith Harrington Interiors
pg. 30, 31, 105

Planeta Design Group
pg. 114, 115, 164-165, 171

Sacha Jacq Interiors
pg. 82-89, 100

ARCHITECTURE

Design Worth Calling Home
pg. 47, 116, 117

DGS/a Architecture
pg. 30, 31, 105

D. Michael Collins Architects
pg. 174

Hickox Williams Architects
pg. 110, 111, 113

Hisel Flynn Architects
pg. 75

LDa Architecture & Interiors
pg. 66

Nashawtuc Architects
pg. 68, 70, 71, 120, 121

Noury Ello Architects
pg. 18-25, 63

Pauli & Uribe Architects
pg. 15, 118, 119

Zac Culbreth Architecture
pg. 8, 108, 109, 129, 150, 152, 155, 160, 161, 166, 167

ZeroEnergy Design
pg. 34, 41

LANDSCAPE DESIGN

a Blade of Grass
pg. 108, 109, 129, 134-135, 148

Hilarie Holdsworth Design
pg. 73

Potted UP
pg. 84

PARTNERS

Acton Refinishing
pg. 130, 131

Cameron's Painting
pg. 101

Classic Structures
pg. 181

Cumar Marble and Stone
pg. 162-165

H M Nordstrom Co
pg. 60-61

Karin Lidbeck-Brent
pg. 140-147, 168-169, 173, 175

Olde Bostonian
pg. 56-58

Shaw Welding Company
pg. 78, 182

SuperStrata
pg. 123



**ADAMS + BEASLEY
ASSOCIATES**

CUSTOM BUILDERS

adamsbeasley.com
978-254-5641

Full-Service Custom Builders
Construction Planning
Custom Millwork
Estate Care

PAPER T2 P 220 A OPEN
PAPER T2 ZE P 220 A OPEN
PAPER T2 P 220 A OPEN
PAPER T2 P 220 A OPEN
PAPER T2 P 220 A OPEN
PAPER T2 P 220 A OPEN

PAPER T2 P 220 A OPEN
PAPER T2 ZE P 220 A OPEN

