

ct art trail



@ctartrail • ctartrail.org

SCAN THIS QR CODE

to register your passport for an extra entry in the Grand Prize drawing, when you visit all 23 sites. (Details, page 34)



TERMS & CONDITIONS:

The Connecticut Art Trail **PASSPORT-JOURNAL** must be presented at each museum's admissions desk to qualify for free admission.

PASSPORT-JOURNAL and Special Promotions are valid only for the visitor named in this document. This document is not transferable. Visitors 18 and older must present ID at each museum.

PASSPORT-JOURNAL is valid only for the dates specified at right.

PASSPORT-JOURNAL can be used for entry only once at each museum and the visit will be marked on the appropriate member page. Not valid for special exhibits that require an additional fee or surcharge.

PASSPORT-JOURNAL cannot be replaced if lost, stolen or damaged; voucher code for an online purchase expires after one use.

No refunds or exchanges will be provided. ALL SALES ARE FINAL.

Misuse of this document is a criminal offense. Purchaser is responsible for any misuse of this **PASSPORT-JOURNAL**.

Questions? Please send an e-mail to contact@ctartrail.org.



Accessibility for those with a mobility issue may be limited at historic sites; please call ahead.

Personal Information

NAME OF VISITOR*

One name per passport. Non-transferable.

*Visitors 18 and older must present ID at each museum

SIGNATURE

ADMIN USE ONLY:

VALID DATES:

Valid for one-day admission to each museum during normal operating hours. Special exhibit fees may apply.

ISSUING MUSEUM:

Staff Initial

Present at each museum's admission desk.



CONNECTICUT



Illustration by Michael Mullian

The Connecticut Art Trail is a nationally recognized collection of 23 world-class museums, cultural centers, and historic sites. The Trail, a 501(c)(3) nonprofit organization, encourages residents and visitors to explore Connecticut's abundant cultural assets.

Share the adventure!

Thank you for supporting arts and culture in Connecticut. We encourage you to take time to explore all 23 member sites, and we wish you countless memories!

Sharing your experiences and special discoveries goes a long way in supporting our member museums. You can:

1. Follow us on social media.

Follow @ctartrail on both Facebook & Instagram, and keep up with contest announcements, recommended itineraries, and highlighted events.

2. Share us!

Share our page with friends and family, share our posts to your account, or share your own photos from your trips on the Trail!

3. Tag us.

Tag @ctartrail. Tag us in a selfie at any of the 23 sites, or in a picture of your favorite exhibition - there are no rules! Your posts help others discover Connecticut's awesome attractions and best-kept secrets.

Happy Trails!

Facebook



Instagram



The Aldrich Contemporary Art Museum

258 Main Street, Ridgefield, CT
(203) 438-4519 • thealdrich.org

Founded by art collector and fashion designer Larry Aldrich in 1964, The Aldrich Contemporary Art Museum is one of the oldest contemporary art museums in the United States. The Museum is one of the few independent, non-collecting institutions in the country and the only museum in Connecticut solely dedicated to the presentation of contemporary art. The Aldrich is internationally recognized for its artist-centric programs and visionary exhibitions. It presents first solo museum exhibitions by emerging artists, significant exhibitions of established artists, and thematic group exhibitions.

Special Promotion

Free Admission for One Guest
Accompanying Passport Holder



Art Museum, University of Saint Joseph

1678 Asylum Ave, West Hartford, CT
(860) 231-5399 • usj.edu/artmuseum

Located on the University's Olmsted Brothers-designed campus, the Art Museum holds a distinguished collection of more than 2,400 paintings and works on paper. Particularly strong in American twentieth-century art, it includes paintings by Thomas Hart Benton, Georgia O'Keeffe and Milton Avery as well as prints by Childe Hassam and George Bellows. The collection of works on paper spans seven centuries, ranging from early European woodcuts to contemporary Japanese prints and a growing collection of photography. The Museum offers four to six special exhibitions per year accompanied by gallery talks, lectures, and family programs.



Bruce Museum

1 Museum Dr, Greenwich, CT
(203) 869-0376 • brucemuseum.org

Located in Bruce Park overlooking Greenwich Harbor, the Bruce Museum is a community-based, world-class institution that offers a changing array of exhibitions and educational programs to promote the understanding and appreciation of art and science.

NOTE: Art Trail Passport is NOT sold or valid during weekends of May and October Outdoor Festivals.

Special Promotion

20% Off Membership
(Individual, Senior or Family)

Learn more at usj.edu/museum-membership

Special Promotion

Free Admission for One Guest
Accompanying Passport Holder



Center for Contemporary Printmaking

299 West Ave, Norwalk, CT
(203) 899-7999 • contemprints.org

A multimedia studio and gallery located in central Norwalk near South Norwalk, dedicated to the art of the print, including traditional and innovative printmaking, papermaking, book arts, digital processes and related disciplines. CCP is the only printmaking facility of its kind between NYC and Boston. It is housed in an historic landmark nineteenth-century carriage house in Mathews Park, near the Lockwood-Mathews Mansion and the Stepping Stones Museum for Children.

Exhibitions are free and open to the public.



Fairfield University Art Museum

200 Barlow Rd, Fairfield, CT
(203) 254-4000, ext. 4046 • fairfield.edu/museum

One museum, two spaces. In the Bellarmine Hall Galleries, the Fairfield University Art Museum displays its permanent collection alongside rotating special exhibitions. The permanent collection features European and American paintings, drawings, prints, photographs, and historic plaster casts as well as artwork from Asia, Africa and the Americas. Also on view are works of art on long-term loan from The Metropolitan Museum of Art, the Yale University Art Gallery, the Worcester Art Museum, and the American Numismatic Society. In the Walsh Gallery, located in the Quick Center for the Arts, the museum presents larger special exhibitions.

Special Promotion

10% Off Classes & Workshops

Special Promotion

Free Set of Notecards
(when you visit Bellarmine Hall Galleries)



Florence Griswold Museum

96 Lyme St, Old Lyme, CT
(860) 434-5542 • florencegriswoldmuseum.org

The recipient of a Trip Advisor Certificate of Excellence, the Florence Griswold Museum has been called “Giverny in Connecticut” by the Wall Street Journal, and a “must-see” by the Boston Globe. In addition to the historic Florence Griswold House, the Museum features a gallery for changing art exhibitions, education and landscape centers, an artist’s studio, twelve acres along the Lieutenant River featuring the Robert F. Schumann Artists’ Trail, and historic gardens.



Greenwich Historical Society/ Bush-Holley House Museum

47 Strickland Rd, Cos Cob, CT
(203) 869-6899 • greenwichhistory.org

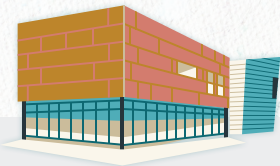
The exciting reimagined campus includes beautiful museum galleries, library, archives, Museum Store, and landscape and gardens restored to the period of the Cos Cob Art Colony. The circa 1730 National Historic Landmark Bush-Holley House survived the American Revolution and became the site of CT’s first American Impressionist art colony from 1890 to 1920, where influential artists including Childe Hassam and John Henry Twachtman lived and worked. Greenwich Historical Society preserves and interprets the history of this vibrant, globally influential community through exhibitions and engaging lectures, programs, and events.

Special Promotion

10% Off in the Museum Store

Special Promotion

10% Off in the Museum Store



Hartford Art School Galleries, University of Hartford

200 Bloomfield Ave, West Hartford, CT
(860) 768-4090 • hartford.edu/gallery

The Hartford Art School Galleries encompass the Joseloff Gallery, the Donald and Linda Silpe Gallery, the Kaman Print Study Center, and the Art on Campus Program. These exhibition spaces inspire our community year-round and engage with students daily through creative visual experiences. The exhibition program, which mounts more than a dozen installations annually, is designed to explore concepts, issues, and directions in global contemporary art, while reinforcing the power, richness, and diversity of visual language today. The galleries are free and open to the public. Please check the website regularly for updates regarding exhibitions and related programming.



Hill-Stead Museum

35 Mountain Rd, Farmington, CT
(860) 677-4787 • hillstead.org

Noted for its 1901 33,000-square-foot house filled with art and antiques. Pioneering female architect Theodate Pope Riddle designed the Colonial Revival-style house, set on 150 hilltop acres, to showcase the Impressionist masterpieces amassed by her father, Cleveland iron industrialist Alfred A. Pope. Collections in 19 intact rooms include original furnishings, paintings, and numerous artworks. The c. 1920 sunken garden is the centerpiece of the grounds.

New Member

Special Promotion

10% Off in the Museum Shop



Housatonic Museum of Art

Stay Close. Stay Curious.

900 Lafayette Blvd, Bridgeport, CT
(203) 332-5052 • www.housatonicmuseum.org

The Housatonic Museum of Art (HMA) holds one of the largest art collections of any community college in the United States with almost 7,000 artworks. The focus of the HMA is modern and contemporary American and European art, including Pablo Picasso, Andy Warhol, Romare Bearden, Cindy Sherman, and Jenny Holzer. The collection also includes artwork from Africa, Asia, and the Americas. Unlike most campus museums, the HMA displays selections of its collection throughout Housatonic Community College. Visitors also enjoy the special exhibitions and programs offered in the Burt Chernow Galleries. Free and open to the public!

Special Promotion

Complimentary Copy of the 50th Anniversary catalog, *Body and Soul: Prints, Paintings, Photographs and Sculptures from the Benjamin Ortiz and Victor Torchia, Jr. Collection*



Lyman Allyn Art Museum

625 Williams St, New London, CT
(860) 443-2545 • lymanallyn.org

Located just off I-95, Exit 83, the Lyman Allyn Art Museum has enjoyed celebrating the arts with visitors for almost a century. Featuring particularly strong collections of American paintings and decorative arts, the Museum also presents a wide range of changing exhibitions and programs throughout the year. Outside, our sculpture trail is surrounded by 12 rolling acres of gardens and lawns for walks and picnics.

Special Promotion

10% Off in the Museum Shop



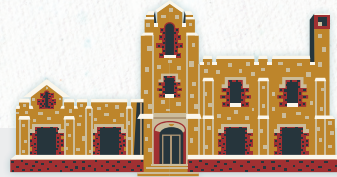
Mattatuck Museum

144 West Main Street, Waterbury, CT
(203) 753-0381 • mattmuseum.org

This vibrant destination in the heart of downtown Waterbury's architectural district hosts numerous changing exhibitions each year as well as a permanent collection, featuring 300 years of work by American giants including John Trumbull, Erastus Salisbury Field, Frederic Church, John Frederick Kensett, Kay Sage, Arshile Gorky, Yves Tanguy, Peter Poskas, Abe Ajay and Alexander Calder. Examine the intriguing Button Gallery of 10,000 buttons from all over the world, and explore the region's history through a dynamic, interactive exhibit.

Special Promotion

Free Admission for One Guest
Accompanying Passport Holder



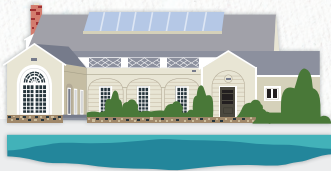
MoCA Westport (Museum of Contemporary Art)

19 Newtown Turnpike, Westport, CT
(203) 222-7070 • mocawestport.org

MoCA Westport is a destination for contemporary visual arts exhibitions, music performances, and comprehensive arts education. Our mission is to build a deeper understanding of, and passion for, the arts by presenting thought-provoking and relevant arts experiences. By sharing a diversity of genres and perspectives, MoCA Westport strives to positively impact the community, and to connect and captivate the local, national, and international audience that we serve.

Special Promotion

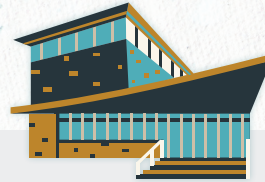
Free Admission for One Guest
Accompanying Passport Holder



Mystic Museum of Art

9 Water Street, Mystic, CT
(860) 536-7601 • mysticmuseumofart.org

Based on the values of community, culture, and creativity, Mystic Museum of Art (MMoA) has served as a focal point for the arts in southeastern Connecticut for more than 100 years. Founded in 1913 as the Mystic Art Association, MMoA today delivers transformative art experiences via richly curated exhibitions, interpretive activities, studio classes, outreach programs, and an engaging museum store, for ever broader audiences. MMoA's mission is to inspire creativity and critical dialogue by engaging the regional community in the understanding, appreciation, and practice of visual art.



New Britain Museum of American Art

56 Lexington Street, New Britain, CT
(860) 229-0257 • nbmaa.org

The first institution dedicated solely to acquiring American art. Spanning four centuries of American history, the NBMAA's collection is renowned for its strengths in Colonial portraiture, the Hudson River School, American Impressionism, and the Ash Can School.

Special Promotion

10% Off in the Museum Store

Special Promotion

10% Off in the Museum Store



Silvermine Arts Center

1037 Silvermine Road, New Canaan, CT
(203) 966-9700 • silvermineart.org

Silvermine Arts Center, one of the oldest artist communities in the United States, is the preeminent visual arts center in Fairfield County. For 100 years, this has been a gathering place for artists and art lovers to enjoy and learn about the arts. Our 4-acre campus encompasses an award-winning School of Art; a nationally renowned Guild of professional artists; a complex of 5 galleries, with free admission, presenting exhibitions by emerging and established artists; a permanent collection of original prints; and an outdoor Sculpture Walk. Our Outreach Programs provide arts education and enrichment in under-resourced Norwalk, Bridgeport and Stamford schools.



Slater Memorial Museum

108 Crescent St, Norwich, CT
(860) 425-5563 • slatermuseum.org

Located on the campus of Norwich Free Academy, Slater Memorial Museum features a global collection of artwork and objects, and several permanent galleries focusing on the art history of civilizations spanning thousands of years. The museum features a world-renowned plaster cast collection in addition to artwork done by notable local Norwich and Connecticut artists throughout the 19th and 20th century.

Special Promotion

Free Artist Notecard with
Gallery Store Purchase

Special Promotion

10% Off in the Museum Shop



Stamford Museum & Nature Center

39 Scofieldtown Road, Stamford, CT
(203) 977-6521 • stamfordmuseum.org

Bring friends and enjoy a picnic on the Meadow, walk over 80 acres of nature trails, visit Heckscher Farm to say hello to the farm animals, and stop into the Stamford Museum Galleries to view rotating exhibitions. The Stamford Museum & Nature Center is dedicated to the preservation and interpretation of art and popular culture, natural and agricultural sciences, and history. We seek to inspire creativity, foster self-discovery, promote environmental stewardship, and nurture an appreciation for lifelong learning through exhibitions, educational programs, and special events that enhance the visitor's experience of our unique site.

Special Promotion

10% Off in the Museum Shop
or 10% Off a New Membership



Wadsworth Atheneum Museum of Art

600 Main St, Hartford, CT
(860) 278-2670 • thewadsworth.org

Located in the heart of Hartford, the Wadsworth is your place to connect with amazing art. Home to nearly 50,000 works of art, the collection encompasses European art from antiquity through Modernism as well as American art from the 1600s through today. The Wadsworth is the oldest continuously operating public art museum in the United States, opening to the public in 1844. Today, visitors find captivating and innovative programs mining the iconic holdings and offering new stories that illustrate the breadth and quality of the museum's collection.

Special Promotion

Free Gift with Museum
Shop Purchase



Weir Farm National Historical Park

735 Nod Hill Rd, Wilton, CT
(203) 834-1896 • nps.gov/wefa

The only National Park dedicated to American Impressionism was home to three generations of artists including Julian Alden Weir, a leading figure in 19th century art and America's most beloved Impressionist. Today the 68-acre park, which includes the Weir House, Weir and Young Studios, barns, gardens, and Weir Pond, welcomes everyone to experience the power of creating art in nature.

Special Promotion

One Free Postcard



William Benton Museum of Art, University of CT

245 Glenbrook Rd, Mansfield/Storrs, CT
(860) 486-4520 • benton.uconn.edu

The William Benton Museum of Art is Connecticut's State Art Museum, located on the University of Connecticut campus at Storrs. Drawing largely from its collection of over 7,500 works of art, the museum presents exhibitions of art dating from the 15th through the 21st centuries. The museum also creates special exhibitions drawn from outside sources and loaned exhibitions. Special events include gallery talks, campus art walks, academic and non-academic discussions, musical performances, and family programs.

Special Promotion

10% Off in the Museum Shop



Yale Center for British Art

1080 Chapel St, New Haven, CT
(203) 432-2800 • britishart.yale.edu

The Yale Center for British Art is a public art museum that houses the largest and most comprehensive collection of British art outside the United Kingdom. Presented to the university by Paul Mellon (Yale College, Class of 1929), the collection of paintings, sculpture, drawings, prints, rare books, and manuscripts reflects the development of British art and culture from the Elizabethan period onward. The museum offers a vibrant program of activities, events, and exhibitions year-round, both in person and online. Free and open to the public.

The YCBA will close to the public starting February 23 for building conservation. While the museum is closed, more than 60 paintings from the collection will be on view at the Yale University Art Gallery.



Yale University Art Gallery

1111 Chapel St, New Haven, CT
(203) 432-0600 • artgallery.yale.edu

One of the oldest college art museums in the world, the Gallery was founded in 1832 when patriot-artist John Trumbull gave over 100 of his paintings to Yale College. Trumbull's original paintings of the American Revolution are now joined by an encyclopedic collection of objects that range from ancient times to the present day and represent civilizations from around the globe. FREE and open to the public.

Special Promotion

Passport Holder Receives a Free Set of Postcards & Notecards

Special Promotion

20% Off Gallery Publication in the Museum Store



Eastern Art Gallery

83 Windham St, Willimantic, CT
(860) 465-4659 • easternct.edu/art-gallery

Eastern Art Gallery is the cultural incubator on campus of Eastern Connecticut State University. The Gallery has a 40-year history of exhibitions of contemporary art that have inspired students, faculty, and the community. With a firm dedication to the public liberal arts mission of the University, the Gallery and Museum Services are committed to providing exhibition programming with depth and relevance to multiple disciplines and a diverse campus and community audience.

Keep Exploring

While the Connecticut Art Trail was founded to honor the state's role in the evolution of American Impressionism — the views and vistas which inspired those early twentieth-century artists are still very much with us today. Rocks, trees and rivers; sloping meadows and sunlit shorelines; wide open pasture skies, farms and forests — there's inspiration around every corner. We encourage you to take time off-trail to explore the area. Ask at the museum visitors' desk about local places to eat, picnic and shop and make your Art Trail experience one to remember.



Notes



Favorite Places

1. _____
2. _____
3. _____
4. _____
5. _____
6. _____

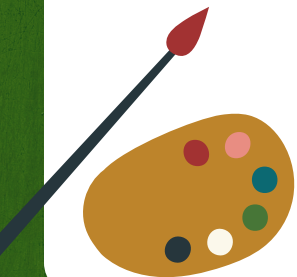
Best Moments



Sketch



I am inspired by...



2023 Art Trail Passport Grand Prize

ENTER TO WIN

An overnight stay and 60-minute couple's massage; valid at the winner's choice of Delamar Hotels.*

RULES & CONDITIONS

Collect a sticker from each member site. Submit your completed CT Art Trail Passport to any member museum by January 1, 2024 to be entered to win. Passports must be valid from start date January 1, 2023 to December 31, 2023 and complete (all 23 locations within one year) to be entered. To claim prize: Must be 18 or older. Submit your email/ phone below for us to contact you:

EMAIL/PHONE: _____

*Reservations required in advance and subject to availability. Gratuity for spa therapists not included.

DELAMAR

**GREENWICH HARBOR · SOUTHPORT
WEST HARTFORD · TRAVERSE CITY
MYSTIC (2023-2024)**

THE ART OF HOSPITALITY REDEFINED IN LUXURY



DELAMAR

GREENWICH HARBOR • SOUTHPORT
WEST HARTFORD • TRAVERSE CITY
COMING 2024 • MYSTIC • WESTPORT • LIME ROCK PARK

DELAMAR.COM