



ATHLETICS

Over 550 student-athletes annually. 26 NCAA national team championships and counting. Hundreds of thousands of fans worldwide. 1 UConn Nation.

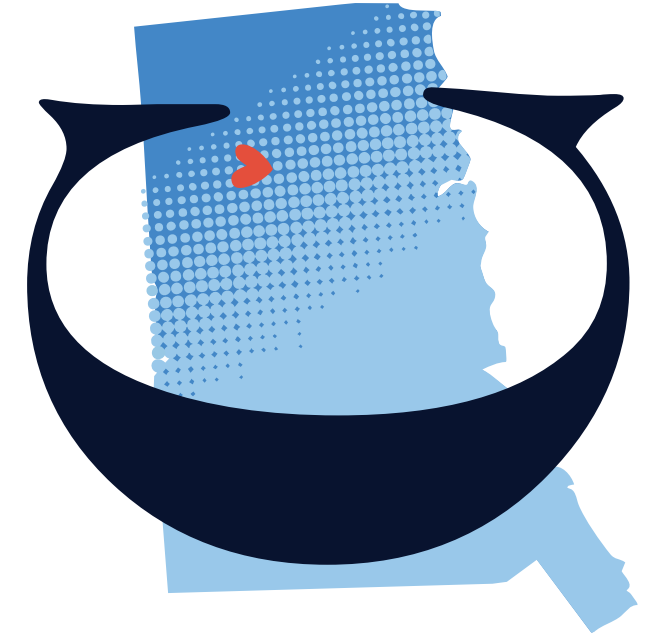
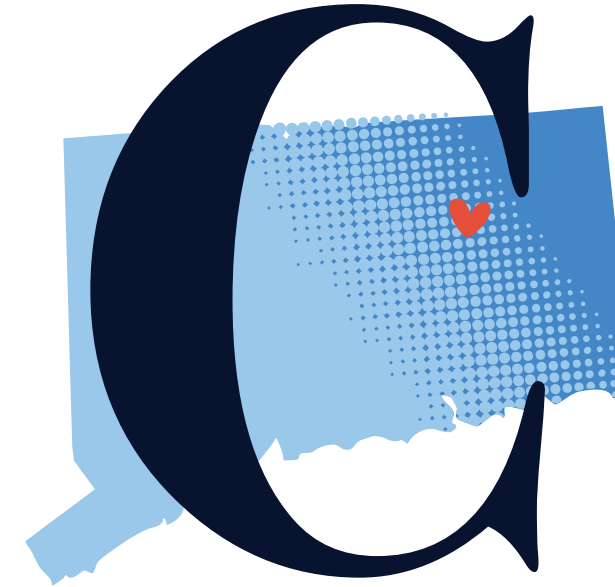




BASKETBALL

UConn is often recognized as the basketball capital of the world and for good reason.

UConn is the only school to have won both the men's and women's NCAA championship in the same year, not once but twice (2004 and 2014).



UConn
FOUNDATION
BECAUSE
OF UConn The Campaign
for UConn Nation



CONNECTICUT

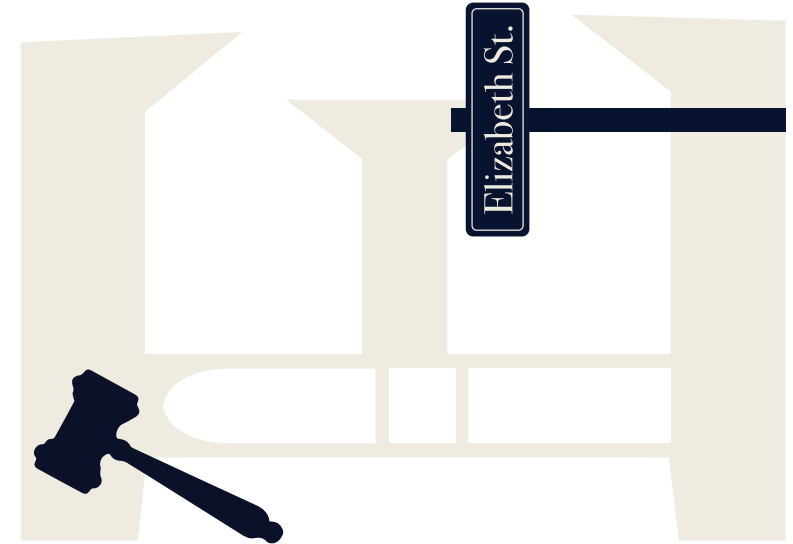
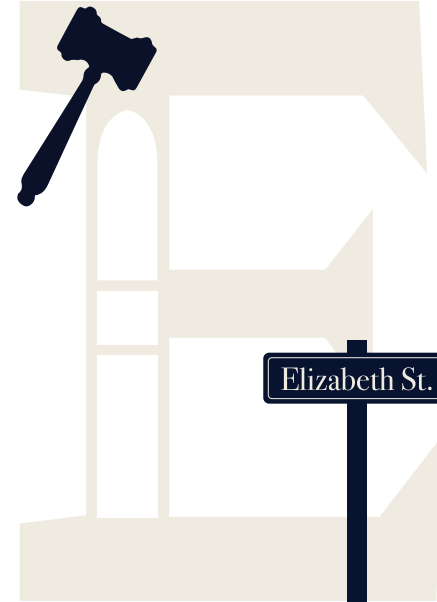
UConn is Connecticut's flagship land and sea grant University dedicated to students, academic excellence and innovation, and health and wellness across the state and beyond.

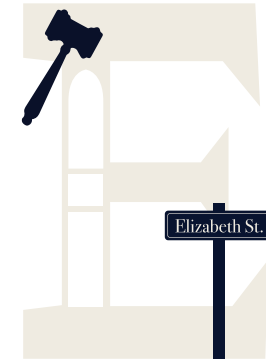




DAIRY BAR

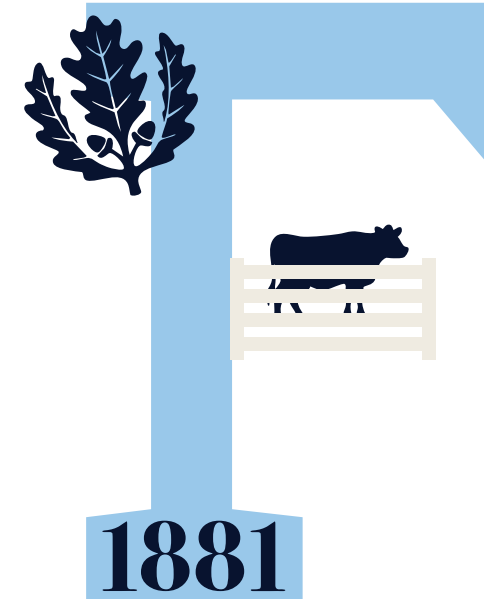
The UConn Dairy Bar was established in 1953 to sell dairy products produced by the Department of Animal Science's Creamery. It is a campus staple for any ice cream lover!





ELIZABETH STREET

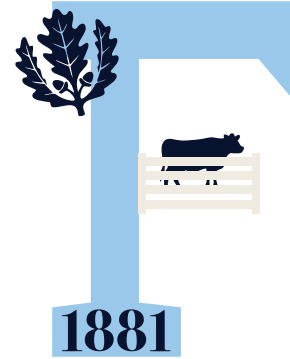
55 Elizabeth Steet in Hartford, CT is currently home to UConn's School of Law. Founded back in 1921, the law school has gone through many changes and occupied eight locations.



UConn
FOUNDATION

BECAUSE
OF UConn

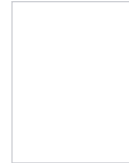
The Campaign
for UConn Nation



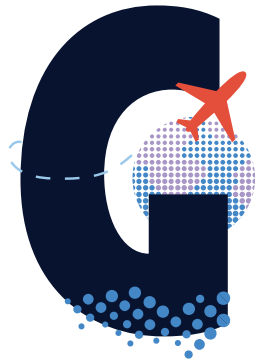
FOUNDERS

April 21st is known as UConn's Founders Day marking the celebration of the Storrs brothers founding the school. Named in honor of UConn's founders, The Founders society recognizes donors' transformational contributions of \$100,000 or more in their lifetime.



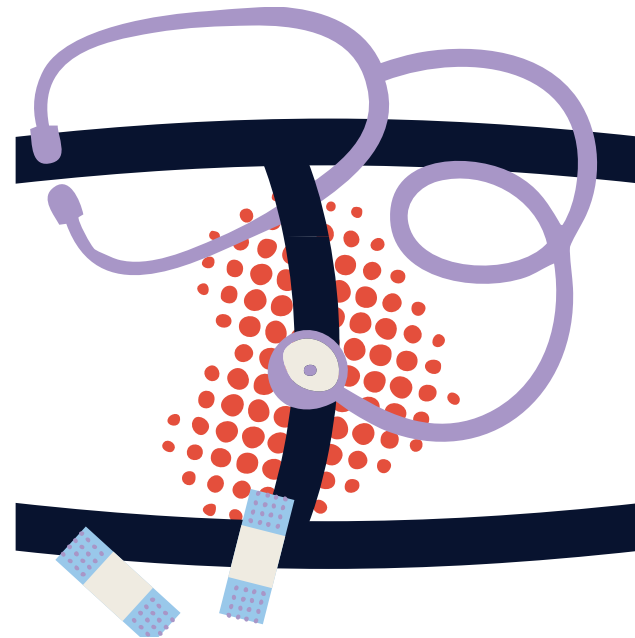
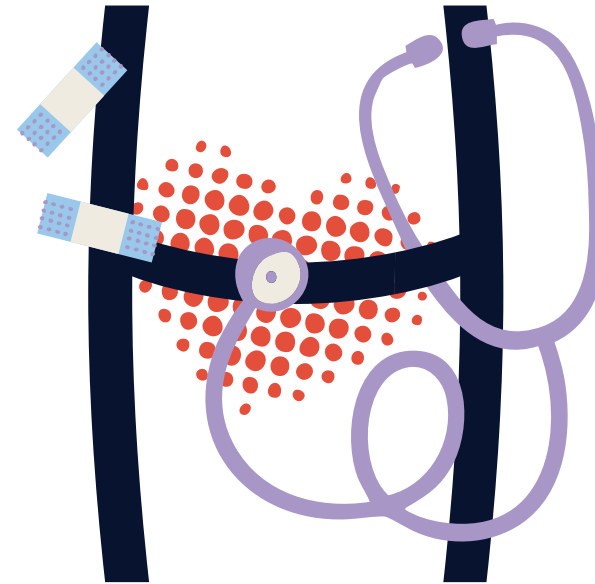


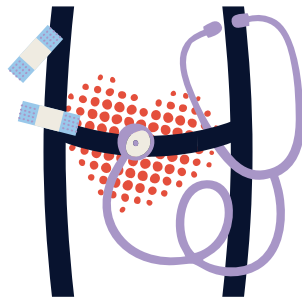
UConn
FOUNDATION
BECAUSE OF UConn The Campaign for UConn Nation



GLOBAL IMPACT

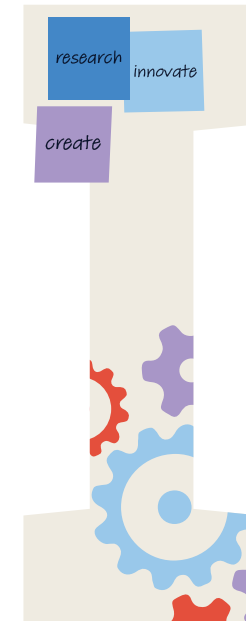
The Office of Global Affairs is the University's gateway to the world, fostering a sense of global-mindedness at UConn and beyond through leadership, research, and experiential learning.

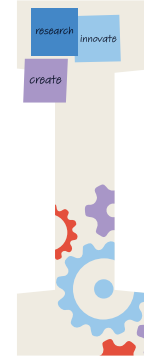




HEALTHCARE

UConn Health is an integrated academic medical center located on 211 acres of land in Farmington, CT. Our commitment to human health and wellness began in 1961 and is Connecticut's largest single source of new physicians, surgeons, and dentists.

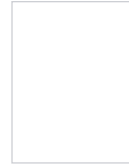




INNOVATION

UConn cultivates an environment of innovation both on campus and across the state through an array of comprehensive programs, resources, mentorship, and funding.



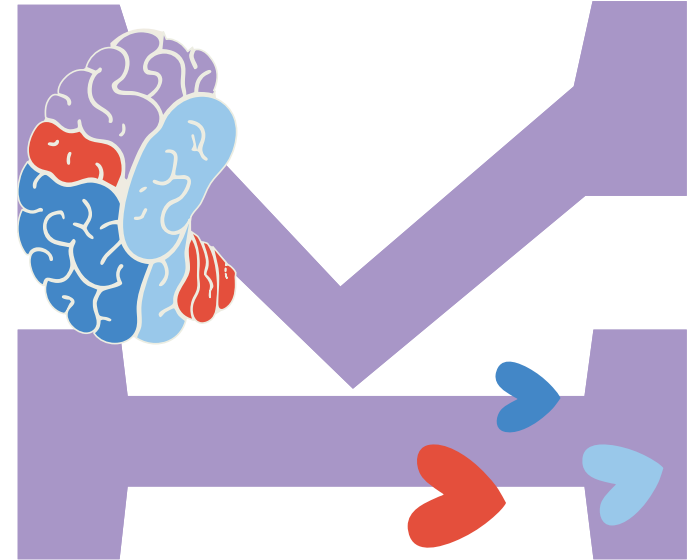
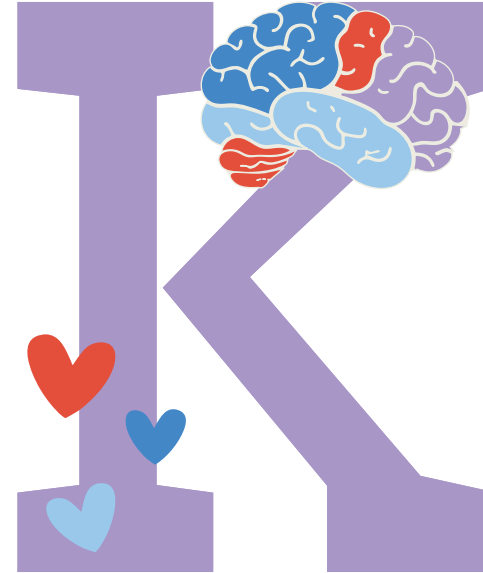


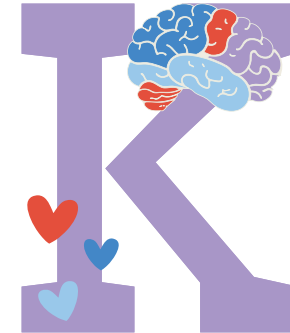
UConn
FOUNDATION
BECAUSE OF UConn The Campaign for UConn Nation



JONATHAN

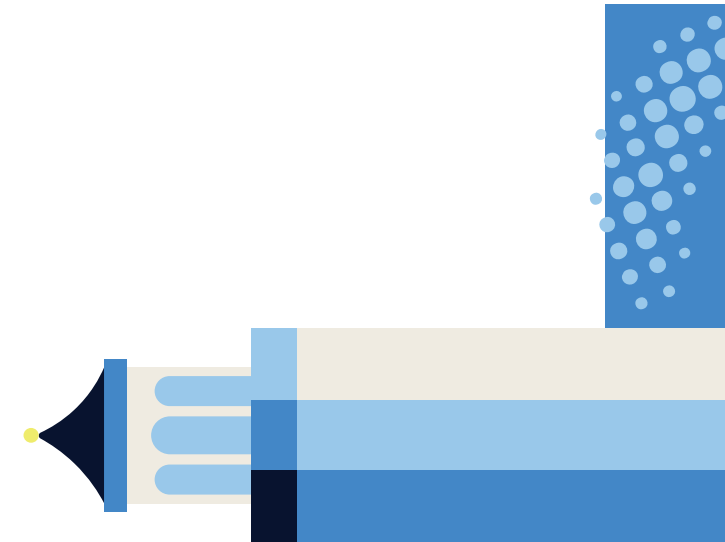
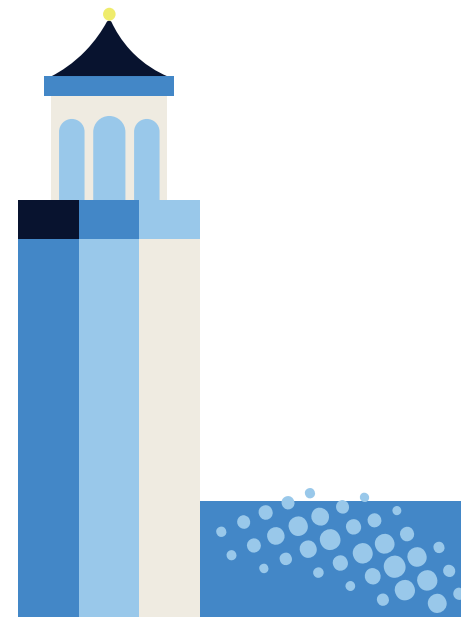
Our beloved mascot, Jonathan, was selected back in 1934 via a student “Name the Mascot Contest” in honor of Jonathan Trumbull, Connecticut’s first state governor.

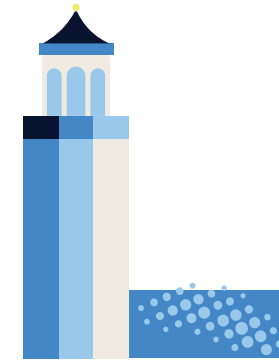




KNOWLEDGE

With 14 schools and colleges at the undergraduate level, and 5 areas of graduate and professional studies, UConn is home to over 32,000 students and 287,000 alumni worldwide.





LIGHTHOUSE

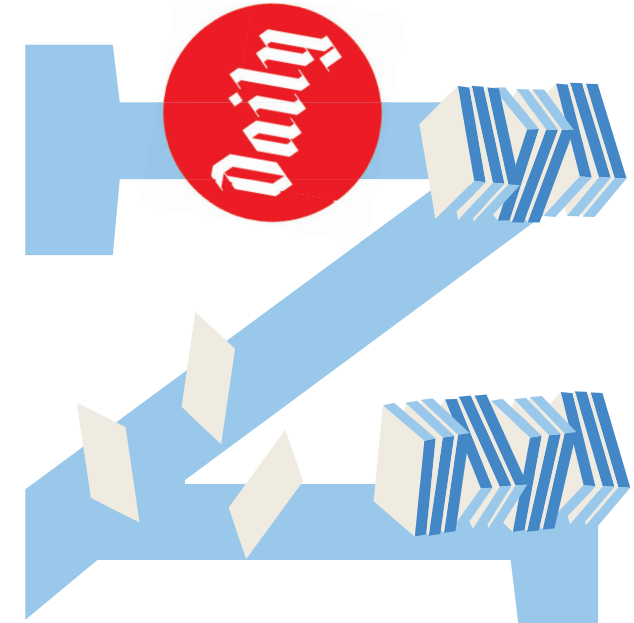
Built in 1944, Avery Point Lighthouse is a prominent landmark located on the corner of UConn's Branford House at Avery Point in Groton, CT.

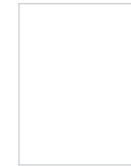




MARCHING BAND

Starting from humble roots in the late 1800s, the UConn Marching Band has grown into one of the best college bands in the country. You can find them cheering and entertaining the crowds at UConn athletic games.





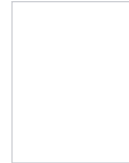
UConn
FOUNDATION
BECAUSE OF UConn The Campaign for UConn Nation



NEWSPAPER

The Daily Campus is UConn's student-led newspaper that has been providing daily news to the UConn community since 1952. The first publications followed a monthly structure dating even further back to 1896.



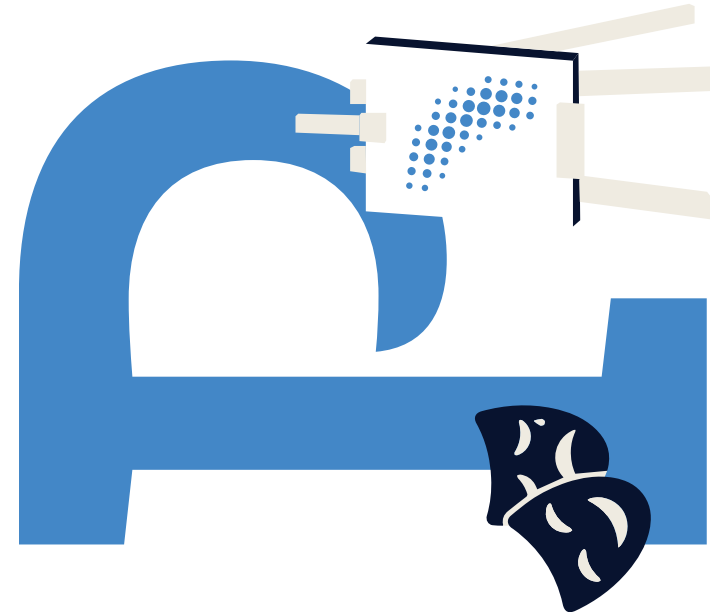


Four horizontal lines for writing, preceded by a vertical line on the left.



OOZEBALL

In 2025, Oozeball at UConn celebrated 40 years of students coming together for a volleyball tournament played in eight inches of mud. It is one of the most fun and by far the muddiest tradition.





PERFORMING AND VISUAL ARTS

Performing and visual arts have been a cultural cornerstone of UConn since the beginning of the University. From Jorgensen to the Benton to the Ballard Institute, today we have numerous venues and galleries showcasing the work of students and visiting artists alike.



UConn
FOUNDATION

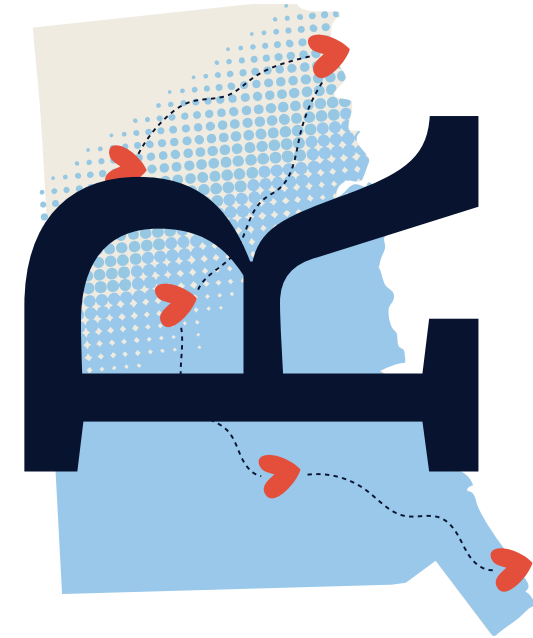
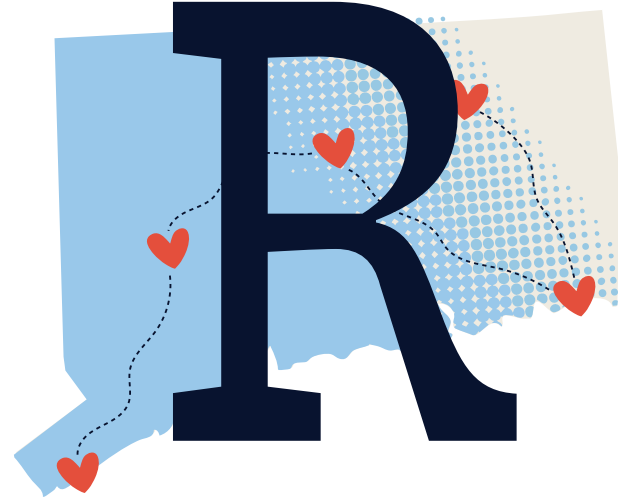
BECAUSE
OF UConn

The Campaign
for UConn Nation

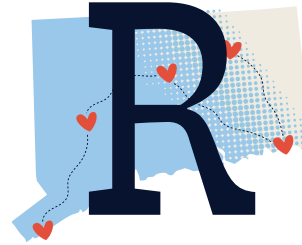


Q-CENTER

The Qualitative Learning Center provides peer to peer tutoring both in-person and online along with numerous resources students can take advantage of to stay ahead in their studies or apply to be the tutors themselves.



UConn
FOUNDATION
BECAUSE
OF UConn The Campaign
for UConn Nation



REGIONAL CAMPUSES

The University of Connecticut is made up of our main campus in Storrs, four regional campuses—Avery Point, Hartford, Stamford, and Waterbury—UConn Law in Hartford, and UConn Health in Farmington.

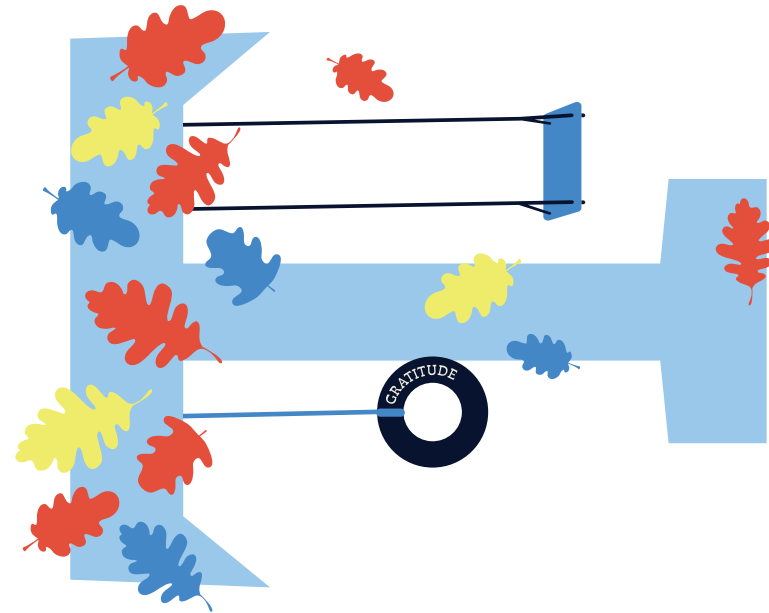
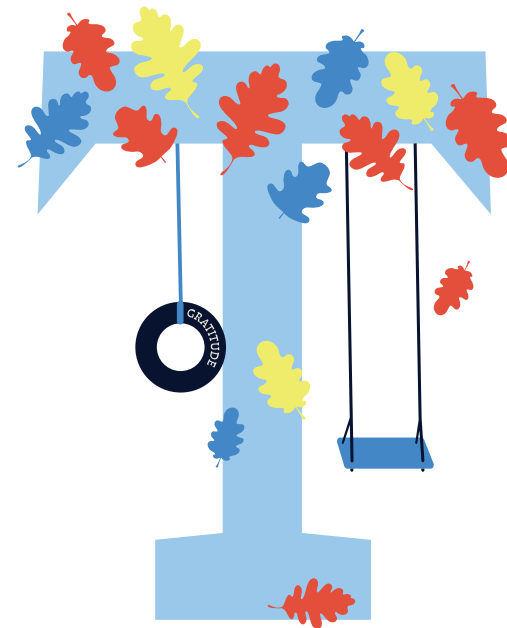


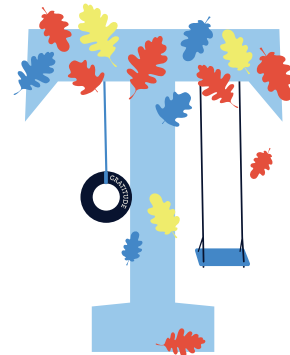
UConn
FOUNDATION
BECAUSE The Campaign
OF UConn for UConn Nation



STUDENTS

UConn is home to over 32,000 undergraduate and graduate students and more than 287,000 alumni worldwide.



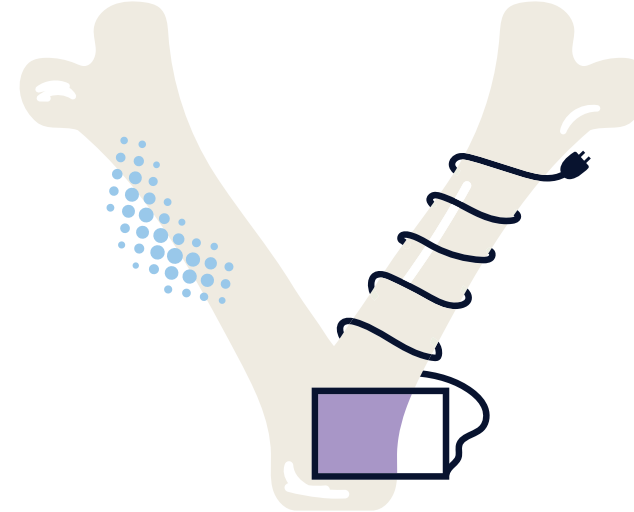


TREES

The University of Connecticut Storrs campus is considered an accredited arboretum, home to over 5,000 trees representing more than 425 different species.



UConn
FOUNDATION
BECAUSE OF UCONN The Campaign for UConn Nation

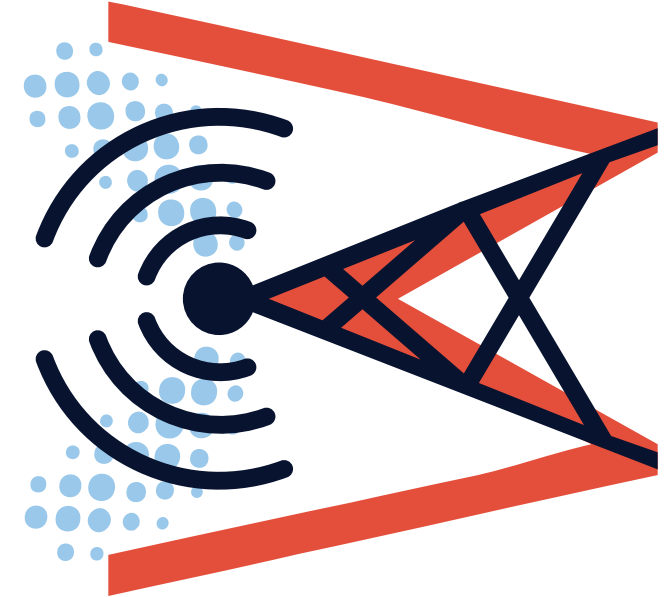
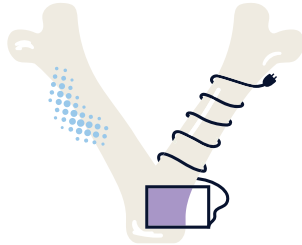


In 1880, brothers Charles and Augustus Storrs donated land and money to start an agricultural school in Connecticut. Today, UConn has grown to become one of the top public universities in the nation.



VIRTUAL ANATOMY LAB

The virtual anatomy lab at UConn's School of Medicine is home to the anatomage virtual cadaver which allows students to explore authentic cross-sectional anatomy of life-size virtual cadavers.





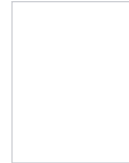
UConn
FOUNDATION
BECAUSE OF UCONN The Campaign for UConn Nation



WHUS RADIO

91.7 FM is home to WHUS, UConn's college radio station. WHUS Radio is a center for creativity and media production where students can work on music, news, sports, and talk programs with origins dating back to the early 1920s.



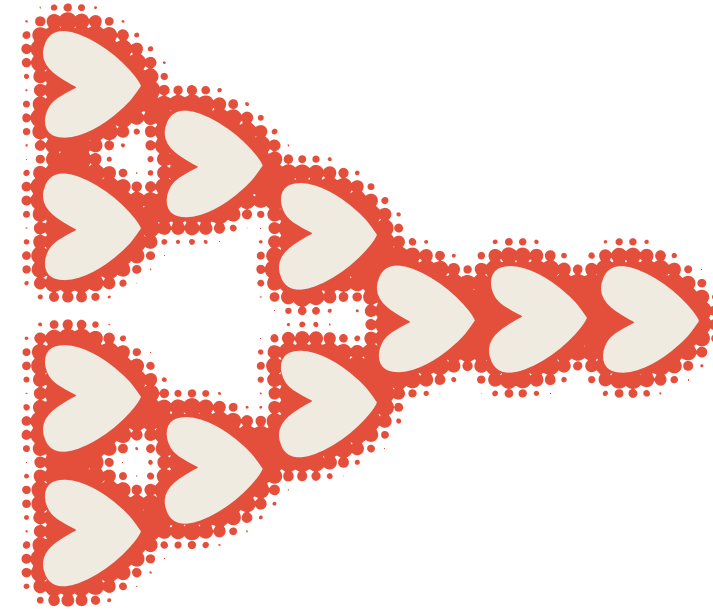
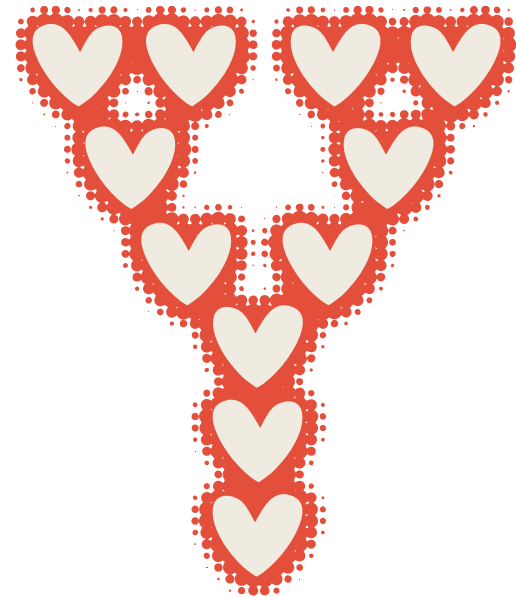


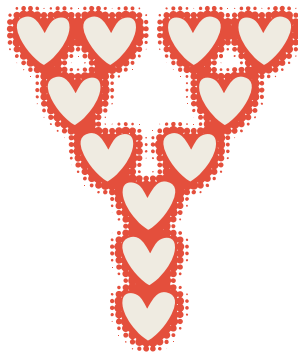
UConn
FOUNDATION
BECAUSE OF UConn The Campaign for UConn Nation



XL CENTER

The XL Center has been a second home to UConn Basketball and Hockey for many years and is now an extension of UConn's Hartford campus, providing a hub for innovation centers, institutes, and clinics.

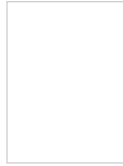




YOU

You are an important part of the UConn community. You make things possible. We are forever grateful.





UConn
FOUNDATION
BECAUSE The Campaign
OF UConn for UConn Nation



ZEN

UConn's student health and wellness center (SHaW) focus on providing high quality compassionate care through programming that promotes an environment reinforcing overall health and wellbeing for all students.